

MERCER BEASLEY LAW REVIEW

PUBLISHED SEMI-ANNUALLY DURING ACADEMIC YEAR
By MERCER BEASLEY LAW STUDENTS

VOLUME III JANUARY, 1934-36 NUMBER 1

	PAGE
LEADING ARTICLES	
The Judicial Influence of Chief Justice Gummere - - - -	1
<i>Theodore McC. Marsh</i>	
Mortgage Deficiencies In New Jersey	27
<i>Jerome C. Eisenberg</i>	
<i>Israel Spicer</i>	
Cancellation of Life Insurance Policies for Fraud - - - - -	60
<i>Leonard J. Emmerglick</i>	
EDITORIAL NOTES	
Liability of Infants for Tortious Conduct in Connection with Contracts - - - - - 88	97
Liability of Insurer on Policy Void for Neglect or Mistake of Agent - - - - -	
Implied Revocation or Ademption of Devise by Subsequent Con- tract to Convey - - - - - 92	102
The Chancery Investigation - -	
RECENT CASES - - - - -	110
BOOK REVIEWS	
Powell: Cases and Materials on the Law of Possessory Estates—	
<i>William E. Sandmeyer</i>	119
Costigan: Cases and Other Authorities on the Legal Profession and Its Ethics - - - - -	120
<i>Arthur F. Egner</i>	
BOOKS RECEIVED - - - - -	121

SUBSCRIPTION PRICE, ONE DOLLAR AND FIFTY CENTS.
ONE DOLLAR PER NUMBER.

MERCER BEASLEY LAW REVIEW
EDITORIAL AND GENERAL OFFICES - - - 1060 BROAD STREET, NEWARK, N. J.



Have You Noticed the Increasing Use Your Courts Are Making of

RULING CASE LAW

in Preparing Their Opinions?



Cite to the Court the
Work for Which
the Court Has
Shown a Marked
Preference.



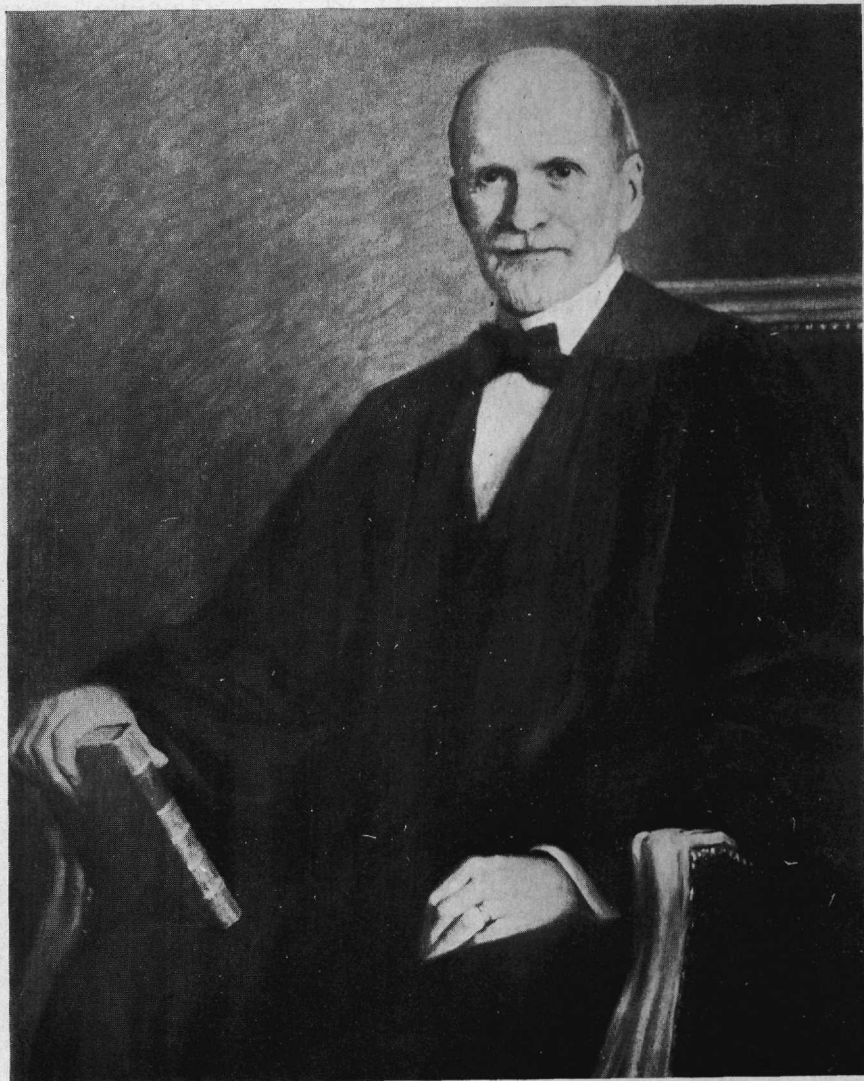
*You need no longer do without R. C. L.
We'll help you finance its purchase on
liberal terms.*

New Jersey Representative

Herman Wolff

1525 Lefcourt Bldg., Newark, N. J.

Please Mention THE REVIEW when dealing with our Advertisers



WILLIAM S. GUMMERE

Justice of the Supreme Court of New Jersey, 1895-1901
Chief Justice, 1901-1933